

ResilienceCharter.org

1717-A NE 9<sup>th</sup> Street, Gainesville FL 32609  
352-745-3690 - info@ResilienceCharter.org

## Parent Pick-up and Drop-off Procedures

All parents who will be dropping off and picking up their children via car, please follow these procedures:

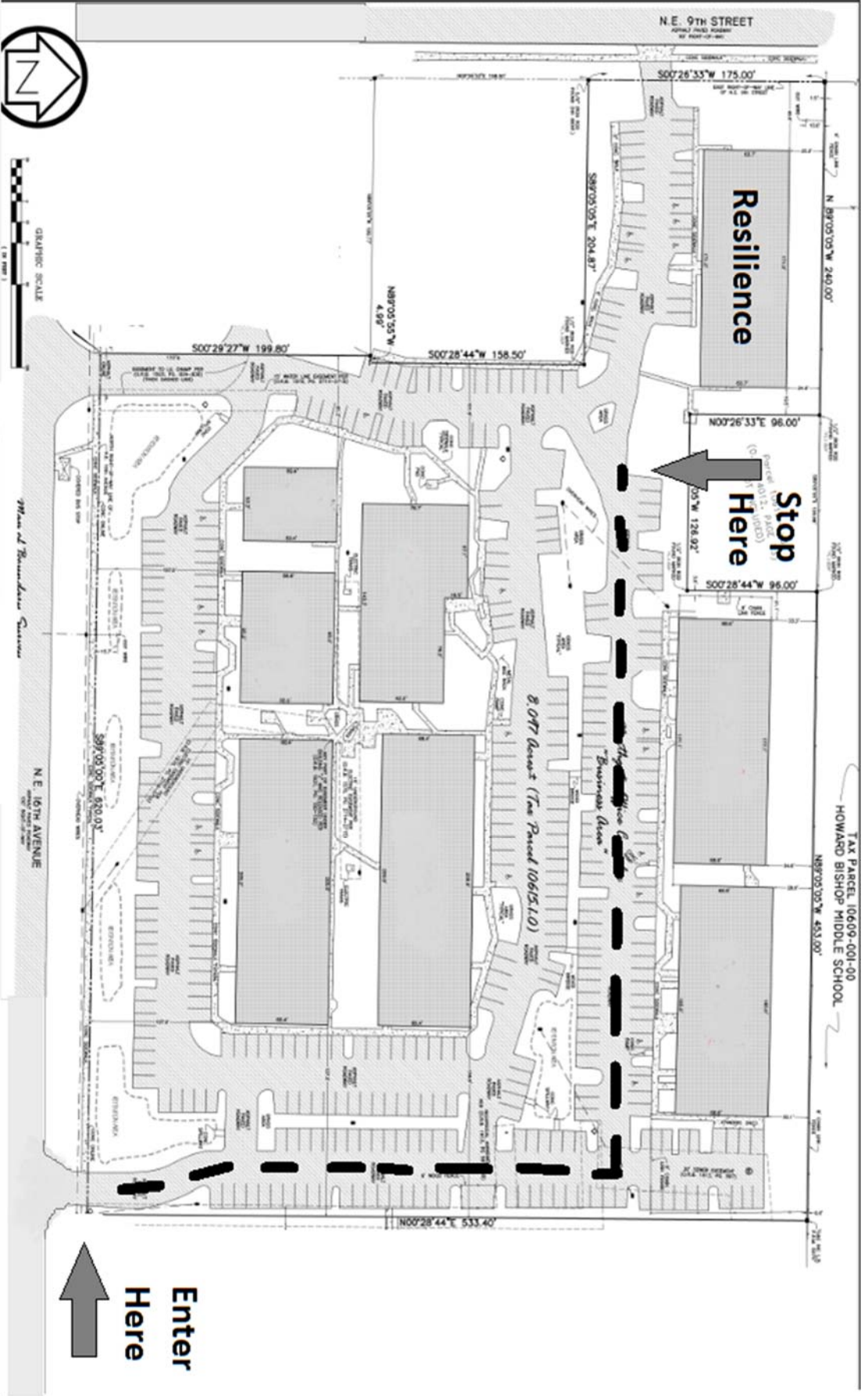
In the morning, students may be dropped off at the front door. Doors open at 8:30 am.

At pick-up, enter the complex from NE 16<sup>th</sup> Avenue from the far Eastern entrance. (see attached map) Follow the blue line on the road along the Eastern edge. Turn left at the end, proceed to the stop sign, or to the next car waiting in line. STOP THERE. Wait there for dismissal time. Please pull to the stop sign before allowing your child to access the car.

You may turn left to exit to NE 16<sup>th</sup> Ave., or continue straight to leave the parking lot on NE 9<sup>th</sup> St.

Before-School Care - Students participating in morning Before-School Care may use the front entrance from 7:30-8:30 am.

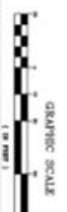
Afterschool Care - Students in Afterschool Care may exit through the double doors in front, after being signed out by parent/guardian. Parents, please park and come into the building to pick up your child(ren).



Resilience

Stop Here

Enter Here



Howard Bishop Middle School

N.E. 16th Avenue

N.E. 9th Street

TAX PARCEL 10609-001-00  
HOWARD BISHOP MIDDLE SCHOOL

2077 Assent (Tax Parcel 10615110)

The Office

Business Area